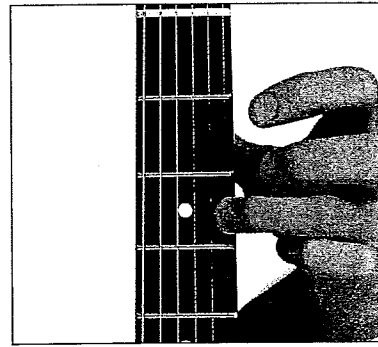
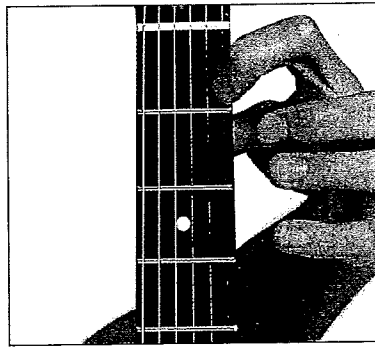
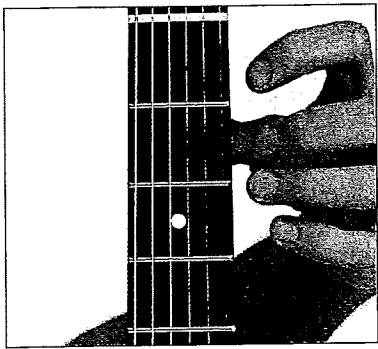
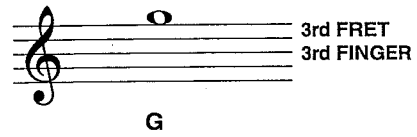
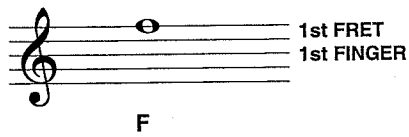
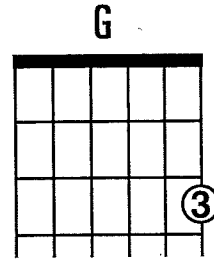
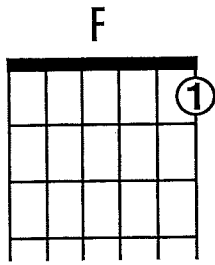
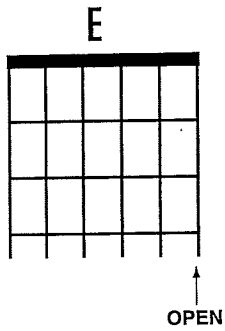


# NOTES ON THE FIRST STRING



This sign (♩) tells you to strike the string with a downward motion of the pick.

Musical staff with five quarter notes: E, F, G, F, E. Includes a count and a "Hold down 1st finger" instruction.

COUNT: 1 - 2 - 3 - 4    1 - 2 - 3 - 4    1 - 2 - 3 - 4    1 - 2 - 3 - 4    1 - 2 - 3 - 4

Musical staff with eighth notes: E, F, G, F, E, D, C, B, A, G, F, E.

1 - 2    3 - 4    1 - 2    3 - 4    1 - 2    3 - 4    1 - 2    3 - 4    1 - 2 - 3 - 4

Musical staff with quarter notes: E, F, G, A, B, C, D, E, F, G, A, B, C, D, E.

1    2    3    4    1    2    3    4    1    2    3    4    1    2    3 - 4

At first practice the exercises slowly and steadily. When you can play them well at a slow speed, gradually increase the tempo (speed).

1 2 3 4

Touch only the tips of the fingers on the strings.

Keep the left hand fingers arched over the strings.

Some songs are longer than one line. When you reach the end of the first line of music, continue on to the second line without stopping. Gray letters above the staff indicate chords to be played by your teacher. Measure numbers are given at the beginning of each new line of music.

Listen to one measure of clicks on the CD before playing.



TRACK 2

C G7

GO ON TO THE NEXT LINE

5 C



TRACK 3

### SPANISH THEME